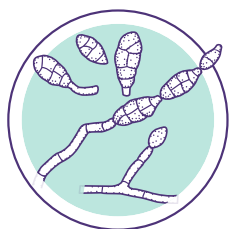


FUNGI IMPLICATED IN ALLERGIC DISEASES



(PAGE 1 OF 3)

Except under very controlled conditions, outdoor fungal spores will enter homes and show measurable levels indoors. Warm, humid, and damp conditions allow spores to proliferate rapidly. Fungal growth can be limited by using an air conditioner and a dehumidifier. Pets allergic to fungi should be kept out of basements, bathrooms, laundry rooms, crawl spaces, or any other habitats that promote fungal growth.

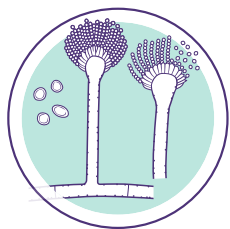


Species: *Alternaria alternata*

Other/Previous Names: *Alternaria tenuis*

Habitat: Common indoor/outdoor fungus. Levels peak in hot and humid weather or during rainy periods. Increased indoor levels as weather warms.

Potential Areas of Exposure for Pets: Indoors: Basements, damp areas.
Outdoors: Wooded areas, leaves, grass, plant debris, mulches.



Species: *Aspergillus amstelodami*; *Aspergillus flavus*; *Aspergillus fumigatus*; *Aspergillus nidulans*; *Aspergillus niger*

Other/Previous Names:

Habitat: Very common indoor/outdoor fungi. Peaks during harvesting seasons and in hot and humid weather or during rainy periods.

Potential Areas of Exposure for Pets: Closed buildings, humidifiers, evaporative coolers, basements, attics, barns. Proliferates easily on plants, foods, dry goods, paper, cotton, leather.

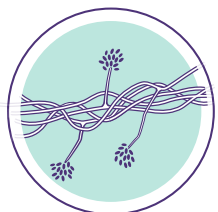


Species: *Botrytis cinerea*

Other/Previous Names:

Habitat: Common outdoor fungus in wet, humid areas. Proliferates indoors on decaying vegetable matter.

Potential Areas of Exposure for Pets: Moldy fruits and vegetables, refrigerators, garbage cans, food debris.



Species: *Acremonium strictum*

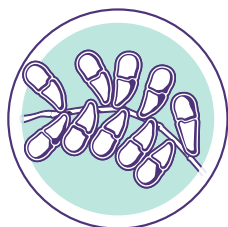
Other/Previous Names: *Sarocladium strictum*, *Cephalosporium acremonium*

Habitat: Common indoor/outdoor fungus. Nonseasonal. Proliferates on wet surfaces indoors.

Potential Areas of Exposure for Pets: Water bowls, toilets, sinks, sewage, standing water, drain pipes, laundry tubs, damp basement floors.

FUNGI IMPLICATED IN ALLERGIC DISEASES

(PAGE 2 OF 3)

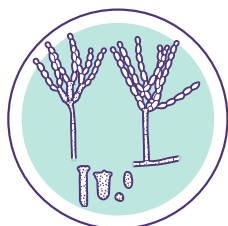


Species: *Trichothecium roseum*

Other/Previous Names: *Cephalothecium roseum*

Habitat: Occasional indoor/outdoor fungus. Proliferates on rotting wood and plants. Common soil fungus.

Potential Areas of Exposure for Pets: Wooded areas, soil, decaying vegetation, mulches. Commonly tracked indoors. Concentrated in basements and other damp areas.



Species: *Cladosporium sphaerospermum* (*Hormodendrum hordei*); *Cladosporium herbarum*

Other/Previous Names:

Habitat: Most common indoor/outdoor fungi. Levels peak in hot and humid conditions or during rainy periods.

Potential Areas of Exposure for Pets: High levels indoors. Found in most rooms. Increased in damp areas, basements, bathrooms, crawl spaces, closets.



Species: *Drechslera spicifera* (*Curvularia spicifera*); *Bipolaris sorokiniana* (*Helminthosporium sativum*)

Other/Previous Names:

Habitat: Very common outdoors, especially in tropical and subtropical areas. Occasionally found indoors.

Potential Areas of Exposure for Pets: Wooded areas, rotting wood, woodpiles, mulches, leaf piles, rotting vegetation and soil, damp basements, crawl spaces, decaying doghouses.

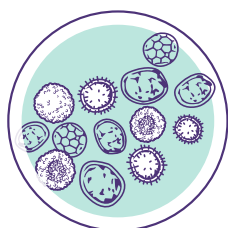


Species: *Fusarium moniliforme*; *Fusarium solani*

Other/Previous Names:

Habitat: Very common outdoors and may occur indoors. Outdoor levels peak in summer and fall in most areas. Seasonal variation affects indoor levels.

Potential Areas of Exposure for Pets: Indoor plants, gardens, crop fields. Especially concentrated near strawberry and tomato crops.



Species: *Ustilago nuda* (Loose Barley Smut); *Ustilago maydis* (Corn Smut); *Ustilago avenae* (Oat Smut); *Ustilago tritici* (Loose Wheat Smut)

Other/Previous Names:

Habitat: Outdoor, widely distributed basidiospores. Carried in the jet stream. Parasitic for specific grains. Indoor levels correlate with outdoor levels.

Potential Areas of Exposure for Pets: Usually will not colonize inside houses. Any area where grains are grown or stored. Most concentrated in grain production areas. Smuts are host-specific.

FUNGI IMPLICATED IN ALLERGIC DISEASES

(PAGE 3 OF 3)

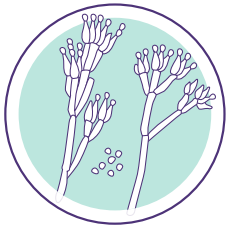


Species: *Mucor circinelloides f. circinelloides*; *Mucor circinelloides f. lusitanicus*; *Mucor plumbeus*; *Mucor racemosus*

Other/Previous Names:

Habitat: Seasonal outdoor fungi, summer and fall. Indoors when conditions allow.

Potential Areas of Exposure for Pets: Proliferates on spoiled meats, animal droppings, horse manure, barns, garbage cans, dirty food production areas.



Species: *Penicillium chrysogenum*, var. *chrysogenum*; *Penicillium digitatum*

Other/Previous Names: *Penicillium notatum*

Habitat: Very common indoor/outdoor fungi. Higher outdoor levels in tropical and subtropical areas. High levels indoors.

Potential Areas of Exposure for Pets: Concentrated in basements or damp areas where fungi can colonize on foods, clothing, leather, paper.

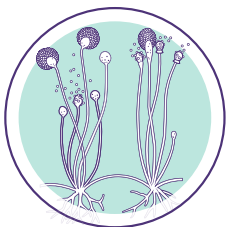


Species: *Aureobasidium pullulans*

Other/Previous Names: *Pullularia pullulans*

Habitat: Extremely common outdoor fungus in temperate areas, but found all over. Found indoors, especially near water sources.

Potential Areas of Exposure for Pets: Damp tile, bathroom floors, sinks, water bowls, sewage, drain pipes, laundry rooms, basements. Common soil organism.

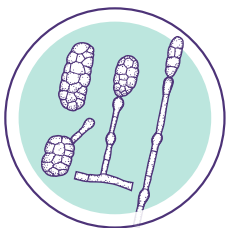


Species: *Rhizopus arrhizus*; *Rhizopus stolonifer*

Other/Previous Names: Bread mold; *Rhizopus oryzae*; *Rhizopus nigricans*

Habitat: Somewhat common indoor/outdoor fungi. Some homes will have high indoor levels.

Potential Areas of Exposure for Pets: Spoiled foods, bread, garbage cans, dirty food production areas, refrigerators.



Species: *Stemphylium solani*

Other/Previous Names:

Habitat: Common indoor/outdoor fungus. Levels peak in warm, humid areas or during rainy periods. Soil organism.

Potential Areas of Exposure for Pets: Wooded areas, woodpiles, mulches, leaf piles. Common in home gardens and farm crop areas, especially tomatoes, asparagus, cabbage.

Reference: Horner WE, Helbling A, Salvaggio JE, Lehrer SB. Fungal allergens. *Clin Microbiol Rev.* 1995;8(2):161-179.